

Route Map

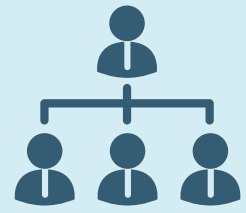
April 2021

- Revised Governance framework and Board composition



May 2021

- Hosting arrangements drafted
- Pre-TUPE engagement process begins
- Outline management structure



July 2021

- Updated Governance framework and Board composition to Board
- Decision on Host
- LIMS out to tender
- Appointment of preferred building contractor



August 2021

- Start of detailed design process



October 2021

- LIMS Business Case
- Formal ratification of Collaboration Agreement
- Formal agreement to financial arrangements
- Begin formal TUPE consultation
- Due diligence exercise complete
- Target operating model published



November 2021

- Agree formation of single Pathology Service for Lancashire and South Cumbria



January 2022

- Conclude formal TUPE consultation
- Finalise full business case



February 2022

- Agree budgets for 2022/23



April 2022

- Establishment of Lancashire and South Cumbria Pathology Service
- Transfer of staff following TUPE consultation
- Transfer of financial and other resources



June 2022

- Finalise full business case for approval



September 2023

- New pathology hub opens

